

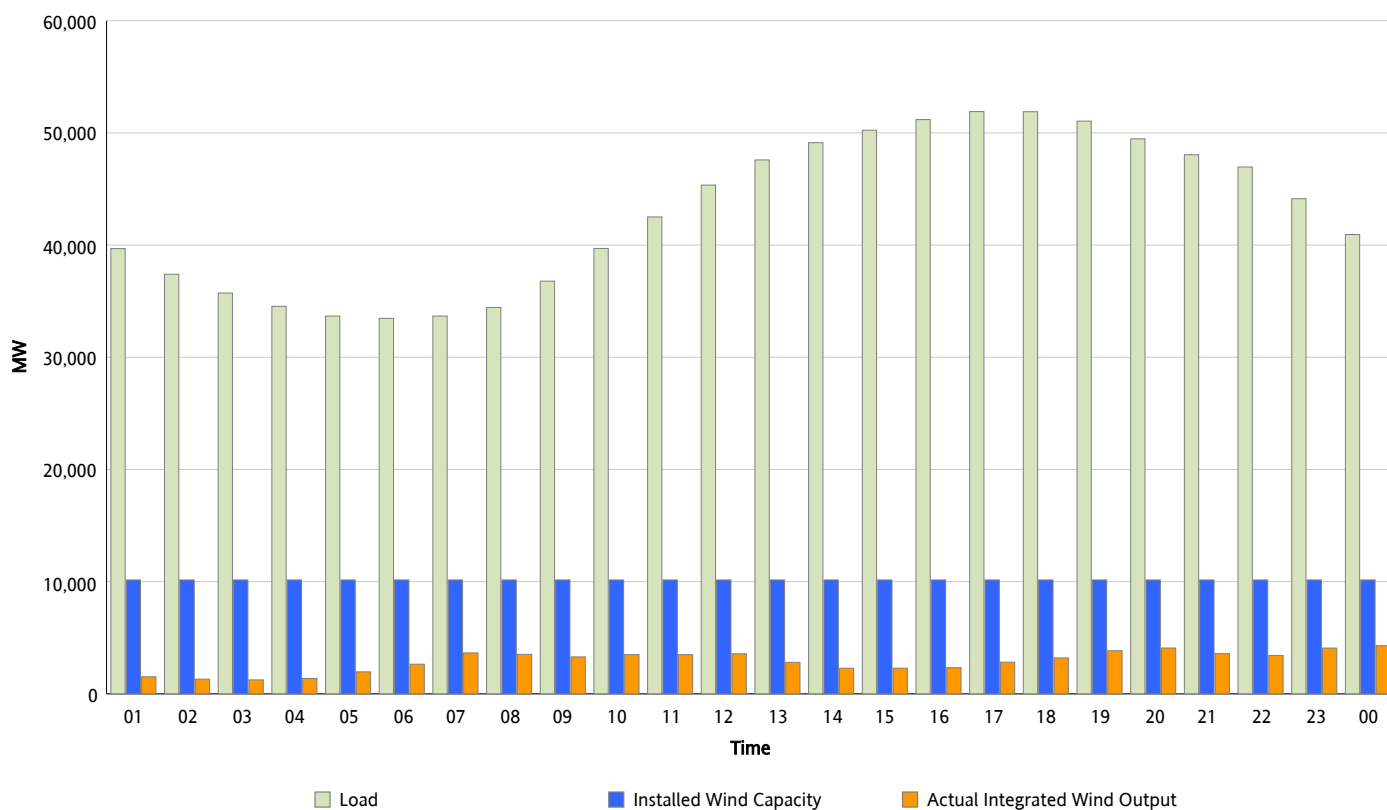


## ERCOT Grid Operations

### Wind Integration Report : 06/15/2013

|                      |           |
|----------------------|-----------|
| Peak Load            | 51,902 MW |
| Load Peak Hour (HE)  | 17        |
| Wind Over Peak       | 2,829 MW  |
| Wind Record 05/02/13 | 9,674 MW  |
| Max Wind Value*      | 4,377 MW  |
| Wind Peak Time       | 23:08     |
| Wind Integration %   | 10.39 %   |

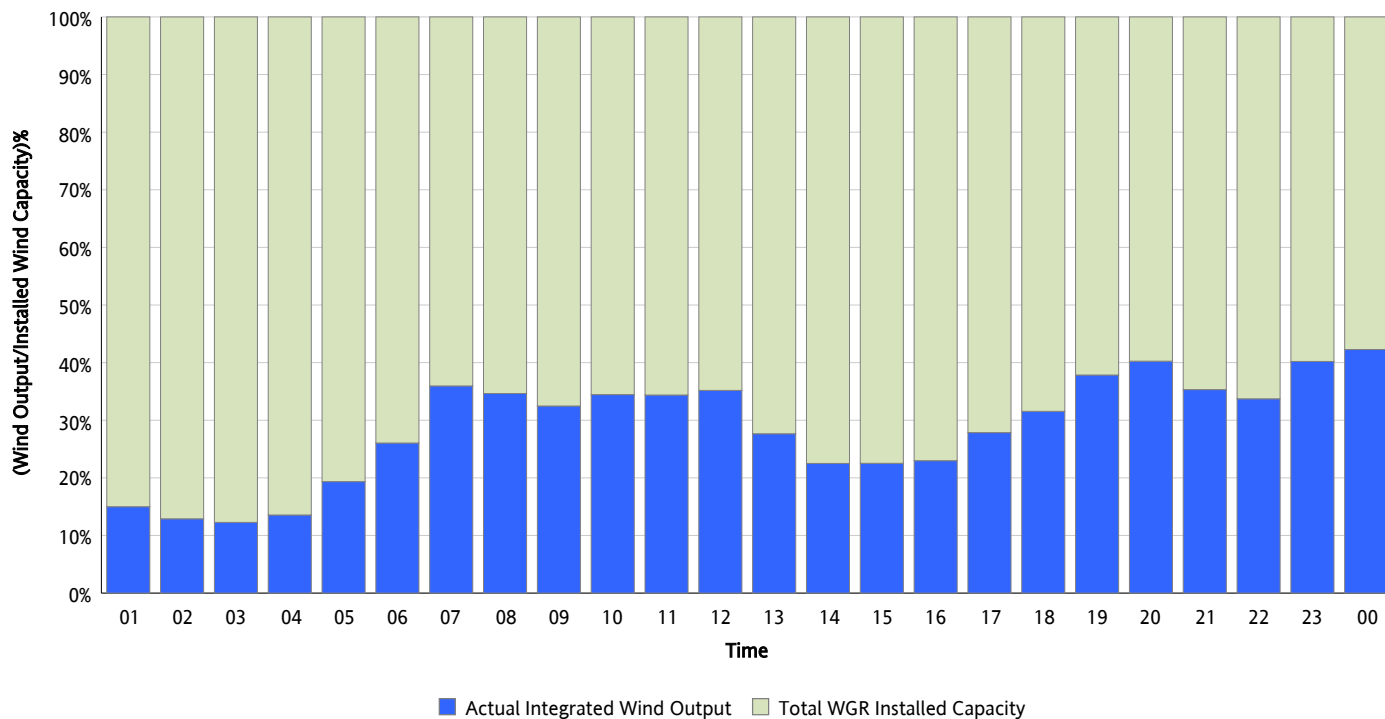
**Hourly Average Actual Load vs. Actual Wind Output**  
**06/15/2013**



*\* Wind Record and Wind Max represent instantaneous values and the rest of the values are integrated over the hour*

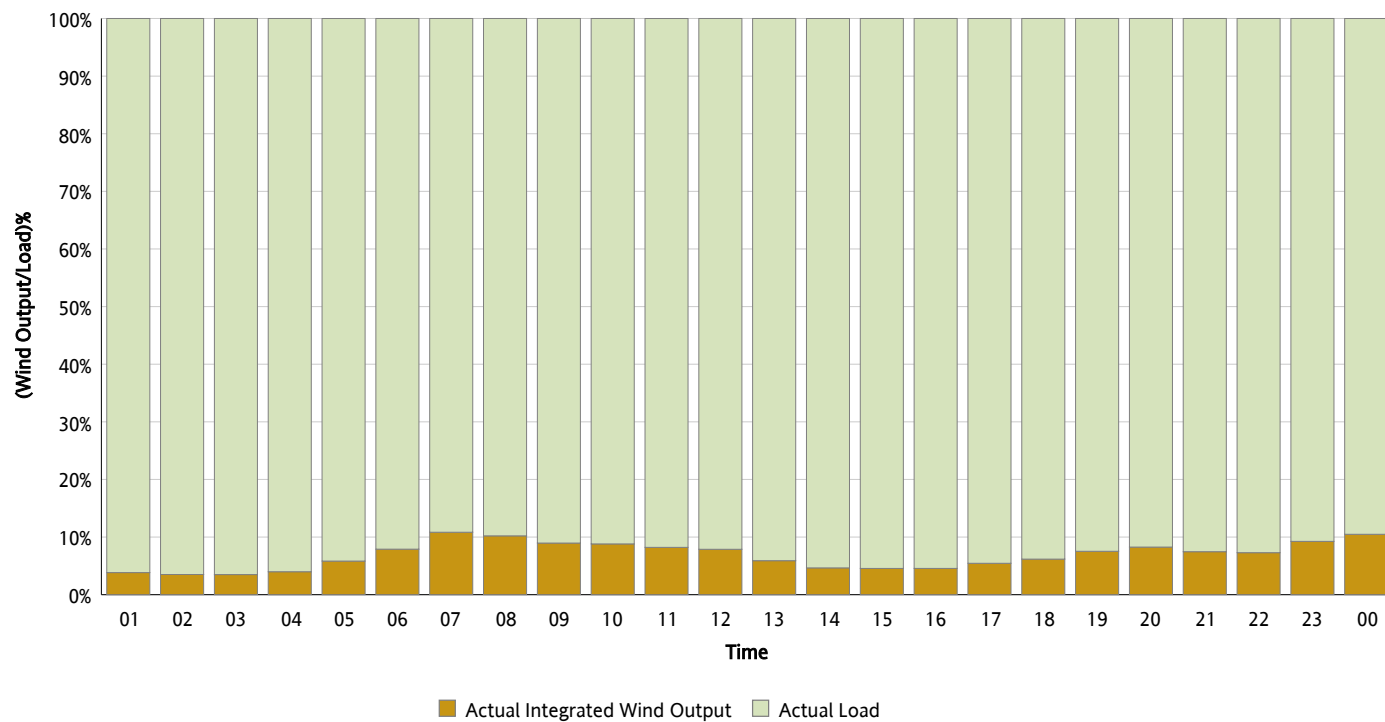
## Actual Wind Output as a Percentage of the Total Installed Wind Capacity

06/15/2013



## Actual Wind Output as a Percentage of the ERCOT Load

06/15/2013



## ERCOT Load vs. Actual Wind Output

06/08/2013 - 06/15/2013

